

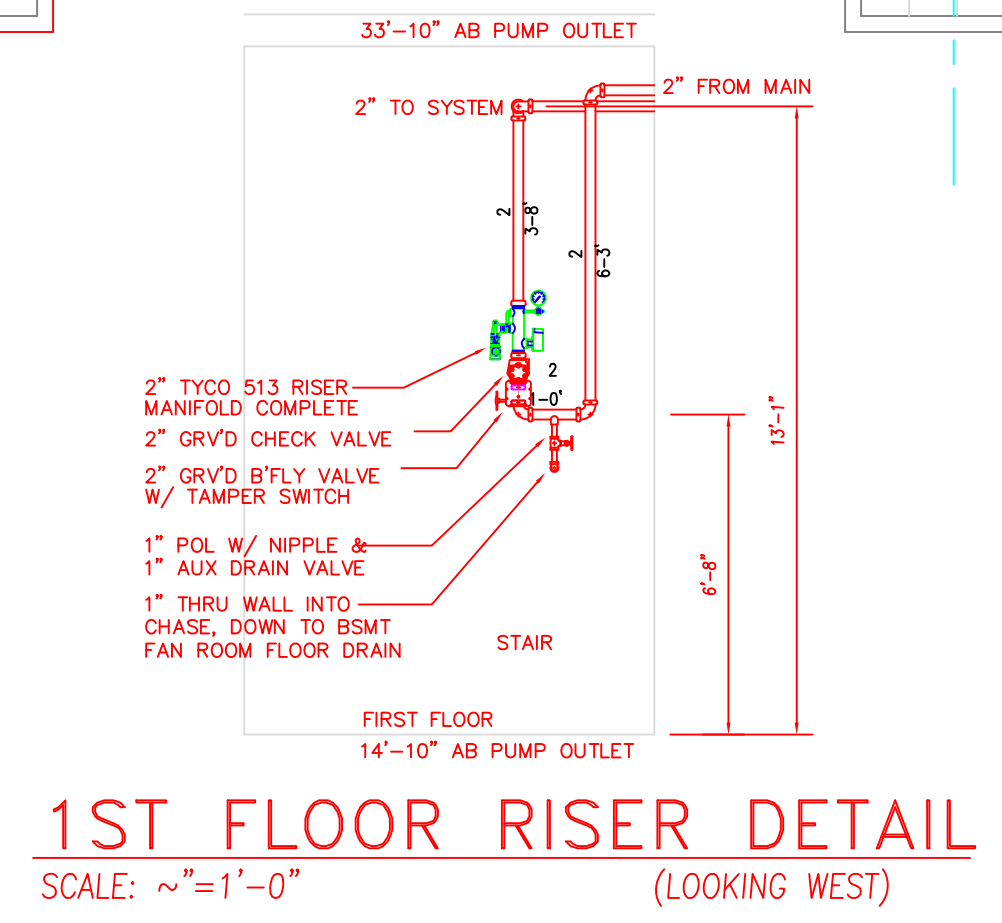
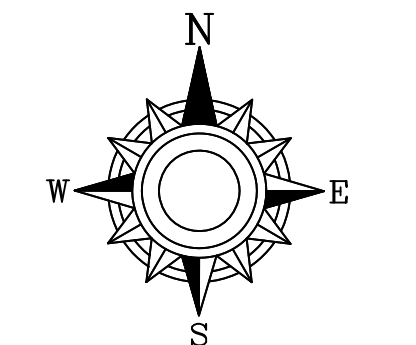
**Remote Area #22**  
**HYDRAULIC REMOTE AREA:**  
 TYCO RFI CONC PENDENT SPRINKLERS  
 CEILING HEIGHT: 11'-11"  
 DENSITY: 10 GPM PER SQ.FT.  
 K FACTOR: 5.6  
 AREA: 1500 SQ.FT. (NFPA FIG. 11.2.3.1.1)  
 ACTUAL: 928 SQ.FT. (NFPA 11.2.3.2.3.1)  
**SYSTEM DESIGN DATA:**  
 REQUIRED FLOW: 256 GPM  
 REQUIRED PSI: 72 PSI  
 HOSE ALLOWANCE: 100 GPM  
**SYSTEM SUPPLY:**  
 STATIC: 158 PSI @ 0 GPM FLOWING  
 RESIDUAL: 135 PSI @ 1500 GPM FLOWING  
 FILE NAME: 1st Floor Training Offices.WX1

**Remote Area #21**  
**HYDRAULIC REMOTE AREA:**  
 TYCO RFI CONC PENDENT SPRINKLERS  
 CEILING HEIGHT: 10'-0" & 12'-5"  
 DENSITY: 10 GPM PER SQ.FT.  
 K FACTOR: 5.6  
 AREA: 1500 SQ.FT. (NFPA FIG. 11.2.3.1.1)  
 ACTUAL: 948 SQ.FT. (NFPA 11.2.3.2.3.1)  
**SYSTEM DESIGN DATA:**  
 REQUIRED FLOW: 275 GPM  
 REQUIRED PSI: 72 PSI  
 HOSE ALLOWANCE: 100 GPM  
**SYSTEM SUPPLY:**  
 STATIC: 158 PSI @ 0 GPM FLOWING  
 RESIDUAL: 135 PSI @ 1500 GPM FLOWING  
 FILE NAME: 1st Floor Remote Offices.WX1

- \*\*\*\*\* FIRE PROTECTION GENERAL NOTES \*\*\*\*\*
1. THE SPRINKLER SYSTEMS ARE TO BE DESIGNED AND INSTALLED IN ACCORDANCE WITH NFPA-13, 2007 EDITION.
  2. ALL EXISTING CEILINGS VARY IN HEIGHT AFF. REFER TO PIPING ELEVATIONS.
  3. SEE SHEET B85-ADM-FP-000 FOR ALL GENERAL NOTES, DETAILS, ETC. (PREVIOUSLY SUBMITTED)
  4. EXISTING BLDG IS ENTIRELY CONC TEE CONSTRUCTION, APPROX. 15' BETWEEN FLOORS.

\*\*ALL LINE HANGERS THIS FLOOR = 68" LENGTH-UNO  
 \*\*ALL MAIN HANGERS THIS FLOOR = 68" LENGTH-UNO  
 \*\*ALL 24 X 24 GRID THIS SHT INDICATES 2ND REVEAL TILES (UNLESS CENTERED IN TILE)

**FIRST FLOOR PIPING PLAN**  
 SCALE: 1/4" = 1'-0"



<b>APPROVALS</b> IN: _____ OUT: _____ BY: _____ DATE: _____		<b>SYSTEM INFO</b> SYS. #, SYS. TYPE, VA. DIA., TTL. SPK., SYS. AREA		<b>SYMBOLS</b> (12-4) PIPE TO BOTTOM OF DECK (12-4) PIPE TO FINISHED FLOOR (12-4) WATER FLOW SWITCH (12-4) TAMPER SWITCH (12-4) HYDRAULIC REFERENCE POINT (12-4) BRANCHLINE/MAN LABEL (12-4) WELDED PIPE LABEL (12-4) CAP (THIRD OR GRVD) (12-4) SYSTEM RISER (12-4) COUPLING (THIRD OR GRVD) (12-4) FLANGED CONNECTION (12-4) SHAW EARTHQUAKE BRACE (12-4) PIPE HANGER		<b>IMPORTANT NOTICE TO USER</b> BY ACCEPTING OR USING THIS DRAWING AND/OR THE INFORMATION CONTAINED HEREIN, THE USER AGREES TO THE FOLLOWING TERMS AND CONDITIONS: THE ELECTRONIC INFORMATION IN THE DRAWING MAY BE SUBJECT TO INTENTIONAL OR UNINTENTIONAL ALTERATION. ANY USE, REUSE, COPYING, MODIFICATION OR ALTERATION OF THE INFORMATION CONTAINED HEREIN SHALL BE AT THE SOLE RISK OF THE USER. THIS INFORMATION MAY NOT BE SOLD OR TRANSFERRED TO ANY THIRD PARTY. USED ON OTHER PROJECTS OR ADDITIONS TO THE PROJECT FOR WHICH IT WAS PREPARED OR USED FOR COMPLETION OF THIS PROJECT BY ANY THIRD PARTY. SIMPLEXGRINNELL DISCLAIMS ALL LIABILITY FOR THE USE OR REUSE OF ALTERED FILES BY THE USER OR ANY THIRD PARTY AND SUCH USE WILL BE A USER'S SOLE RISK. USER SHALL TO THE FULLEST EXTENT PERMITTED BY LAW, DEFEND, INDEMNIFY AND HOLD SIMPLEXGRINNELL HARMLESS FROM ANY AND ALL CLAIMS FOR LOSS, DAMAGE OR INJURY ARISING DIRECTLY OR INDIRECTLY THEREFROM. IN LOCALITIES SUBJECT TO FREEZING CONDITIONS, THE OWNER MUST MAINTAIN HEAT THROUGHOUT WET PIPE SPRINKLER SYSTEMS AREAS AND IN ENCLOSURES WHERE DRY PIPE, DELUGE OR OTHER VALVES CONTROLLING WATER SUPPLIES TO SPRINKLER SYSTEMS ARE LOCATED.		<b>HYDRAULIC DESIGN DATA</b> DESIGN AREA #, HAZARD CLASSIFICATION, DENSITY (GPM/SQ.FT.), DESIGN AREA (SQ.FT.), DESIGN LENGTH (HOSE ALLOW.), DEL. AREA (INSIDE), DEL. AREA (OUTSIDE), # OF SPRINKLERS, TOTAL SYSTEM REQUIREMENTS (GPM, PSI, AT NODE)		<b>SPRINKLERS / NOZZLES</b> SYM, QTY., ORIENTATION, SPK FINISH, TEMP., K-FACTOR, NPT, SIN, MANUFACT., MODEL #, RESPONSE, ESCUTCHEON / SPRINKLER NOTE		SCALE: 1/8" = 1'-0" DRAWN BY: Pat M CHECKED BY: _____ CONTRACT WITH: HCPID CONTRACT NO: 971123901 DATE: 10-14-13 REV. #: A		I have reviewed these plans and certify that they comply with the adopted NFPA standards. SIMPLEXGRINNELL, LP 1125 E. COLLENS BLVD. RICHARDSON, TEXAS 75081 972-587-5200 972-587-5209		<b>tyco SimplexGrinnell</b> LOCAL OFFICE: 8323 N Eldridge Pkwy Suite 120 Houston, TX 77041 <b>HARRIS COUNTY ADMIN BLDG</b> 2013 SPRINKLER RETROFIT 1001 Preston Houston, TX SHEET DESCRIPTION: First Floor Fire Protection Plan LATEST REV. DESCRIPTION: 2-27-14 DRAWING NO. B85-ADM-FP-001	
---	--	---	--	--	--	---	--	--	--	---	--	---	--	--	--	---	--

225 TOTAL SPRINKLERS / NOZZLES THIS SHEET

SEE REMOTE AREA PLACARDS THIS SHEET

AS-BUILTS