

1. GENERAL

- 1.1 This addendum modifies the Bid Documents for the Jennie E. Hughes Park Improvements project.
- 1.2 This Addendum forms a part of the Bidding Documents and will be incorporated into the Contract documents, as applicable.
- 1.3 Acknowledge receipt of all addenda prior to submittal of bid, by reference in the bid form.

2. PROJECT MANUAL

The following document sections are modified, incorporated into the Project Manual and reissued herein, changes indicated by ¶ mark left hand side of document

2.1 Site Metal Fabrications

- 2.1.1 Strikethrough added to 2.01 STEEL for project clarity.

3. DRAWINGS

The following drawings have been revised. Included is a brief description of revisions. Revisions clouded on drawings.

- 3.1 L6.01 – Clarified material under flush curbs.

4. MISCELLANEOUS

- 4.1 Provided Bid Form in excel for contractors use.

Answers to questions submitted to Civast.

- 4.2 QUESTION - *What is the length of the benches? Are they still Owner Provided*

- 4.1.1 Benches are 6' long and remain owner provided as stated on the drawings.

- 4.3 QUESTION - *Please verify that all park fencing, stair handrail and pavilion railing are to be made using aluminum material as stated on L6.23/Note 4.*

- 4.3.1 ANSWER – Confirmed, all park fencing, stair handrail and pavilion railing are to be made using aluminum material as stated on L6.23/Note 4

- 4.4 QUESTION - *What material is to be used for Typical Park Fence and Modified Typical Park Fence, Black Steel - hot dipped galvanized after fabrication as stated in the Site Metal Fabrications specification or 6061 extruded aluminum as stated on L6.23/detail 5 # 4?*

- 4.4.1 ANSWER - Aluminum as stated on 05/L6.23

END OF ADDENDUM 2

SECTION 02500

PART 1 - GENERAL

1.01 SUMMARY

- A. This Work of this Section shall include:
Fabrication and Installation of:
Railings, Fences and Gates

1.02 SUBMITTALS

- A. Shop Drawings: complete, measured shop drawings are required for metal fabrication items.

1.03 QUALITY ASSURANCE

- A. Contractor Qualifications:
 - 1. Fabrication work of this Section shall be contracted to a single company with comparable experience for at least five (5) years.
- C. Standards: Except where modified or exceeded by this Specification, conform to applicable sections of ASTM 123. Refer to Structural Specification for additional standards.
- D. Comply with governing codes and regulations. Provide fabricated products of acceptable manufacturers which have at least 5 years successful experience producing products of a similar nature.
- E. Consultant may review components during fabrication at location of fabrication. Review during fabrication does not relieve Contractor of responsibility to provide metal fabrications that fully meet the requirements of the contract documents.
- F. Uniformity: Care is to be taken to ensure uniformity of color and finishes.
- G. Relations with other Trades: Coordinate schedule requirements related to placement of concrete footings, foundations and beams. Coordinate requirements related to on-site measurement required for proper fabrication of metal components.

PART 2 - MATERIALS

~~2.01 STEEL~~

- ~~A. Steel pipe, tubing, plate, mesh, rods, angles and shapes per the Drawings.~~

- ~~B. All steel is to be black steel, which will be hot dip galvanized after fabrication, except where otherwise noted in the Drawings.~~
 - ~~C. Hot dip galvanizing shall conform with ASTM A123 / A 123M, latest edition.~~
- 2.02 ALUMINUM: shall be 6061 extruded aluminum components.
- 2.03 FASTENERS
- A. Furnish all bolts, nuts, screws, clips, washers, and any other fasteners necessary for proper installation of items specified herein and in the Drawings, of a material compatible with the related metal fabrication.
 - B. Steel fasteners are to be hot-dip galvanized in conformance with ASTM A153, latest edition. Refer to Drawings for additional information.

PART 3 - EXECUTION

3.01 SURVEY AND FIELD MEASUREMENT

- A. Contractor is responsible to make accurate field measurements required for preparation of accurate Shop Drawings and fabrication of members that fit together accurately in the field.

3.02 FABRICATION

- A. Metal fabrications are to be high quality, finely crafted, with true lines, angles and curves as specified. Joints are to be tight and uniform. All angles are to be true 90 degrees unless designated otherwise. No deformities in shape, line or finish may be visible from 10' away.
- B. All materials are to be new, in good condition.
- C. Welds normally exposed to view in the finished work shall be uniformly mad and shall be ground smooth as much as possible within conformance with structural requirements.
- D. Refer to the Drawings for additional fabrication requirements and paint finish.

3.03 SHIPPING

- A. Coordinate schedule for shipping so that metal fabrications are not stored on-site any longer than necessary.

- B. Metal fabrications shall be shipped in such a manner as to prevent damage to the components. Provide adequate protection and bracing during loading, shipping and unloading.

3.04 INSTALLATION

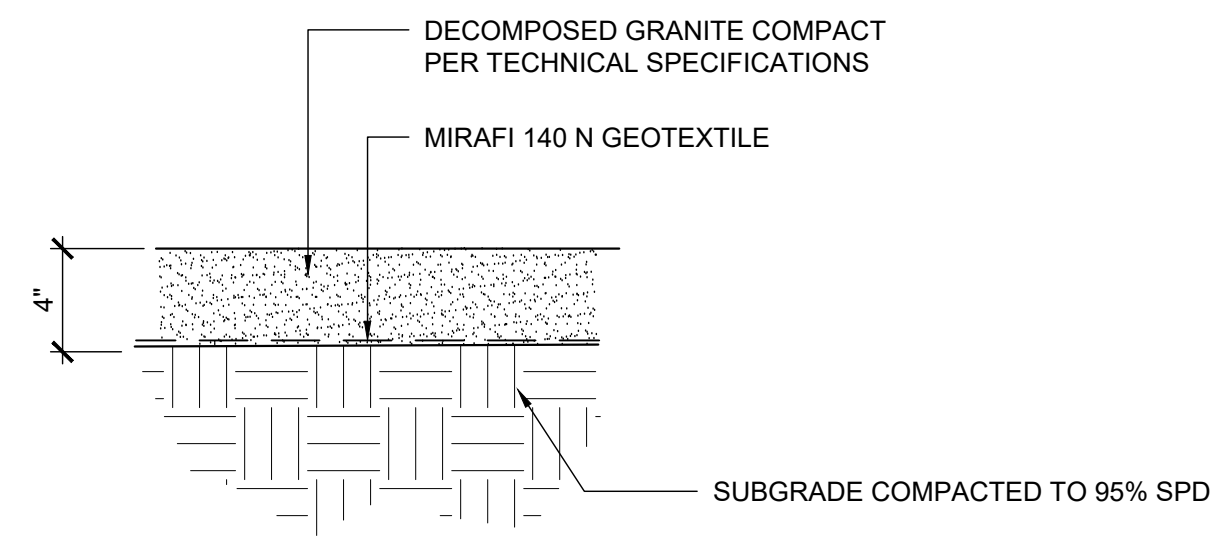
- A. Metal fabrications are to be transported on-site and handled in a manner that prevents damage to the components. Contractor shall be responsible for providing equipment capable of moving, lifting and placing components without damage to the components, to surrounding improvements or vegetation.

- B. All metal fabrications are to be installed and assembled using connections indicated in the Drawings. Minimize field welding to those connections that are absolutely necessary. Components that do not fit or connect as specified shall be returned to the fabrication shop for modification and hot-dip galvanizing.

3.05 PROTECTION

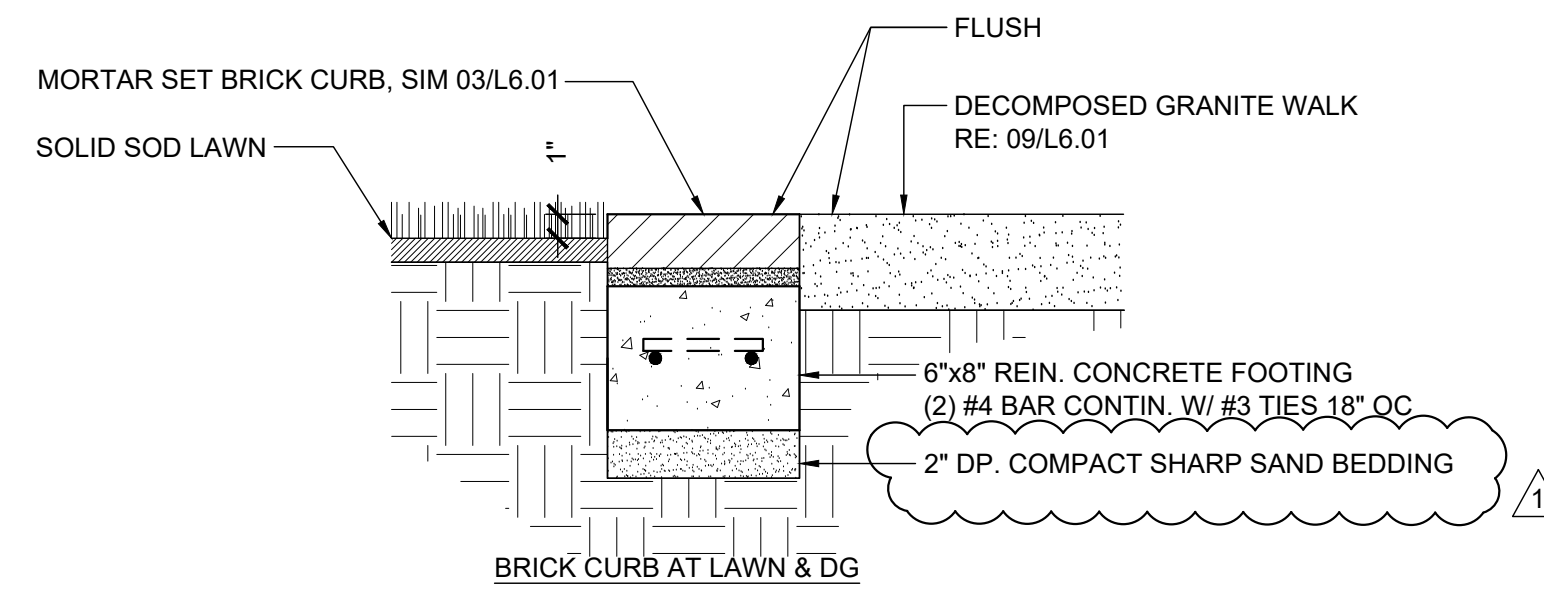
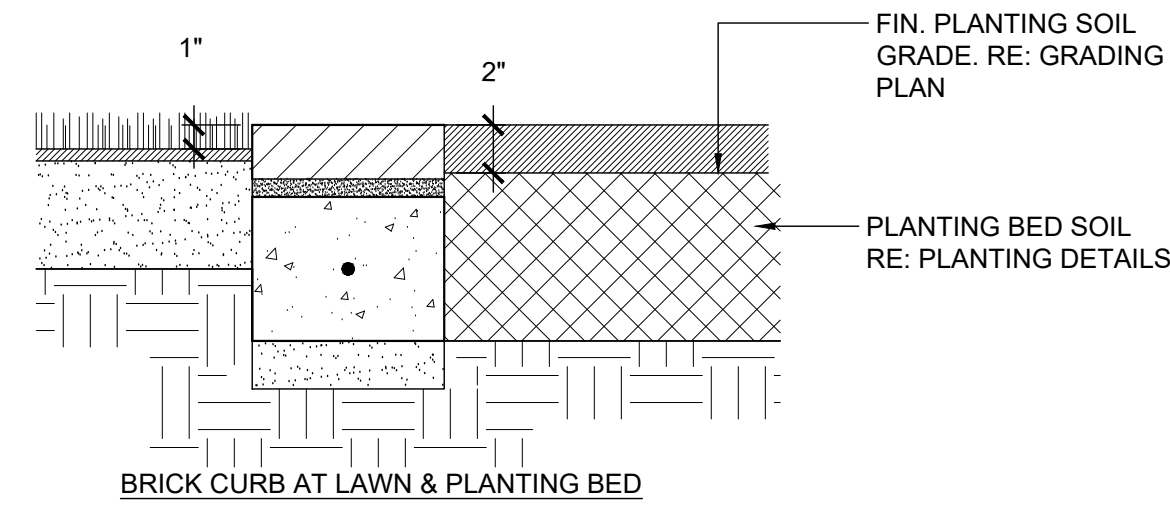
- A. After installation of metal fabrications, the Contractor shall protect them in-place for the duration of construction, as required to prevent damage by equipment or personnel during other operations. The Contractor shall be responsible for determining best sequencing of operations to prevent damage. Metal components that are damaged prior to Substantial Completion are subject to rejection during construction or at completion of construction; if rejected, they must be removed and replaced.

END OF SECTION

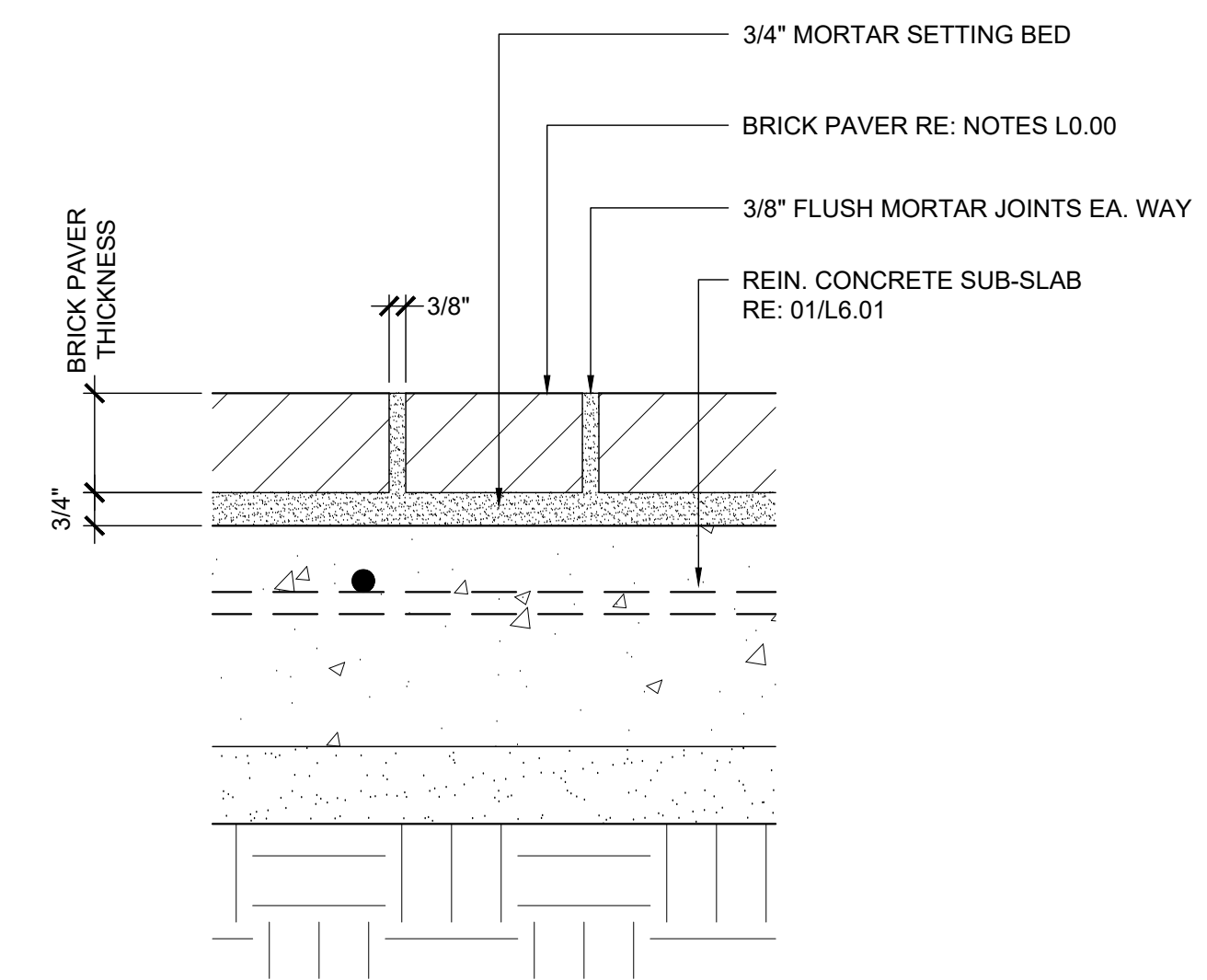


- NOTES:
1. DECOMPOSED GRANITE: RE SPECS
 2. PROVIDE 1 GAL SAMPLE FOR APPROVAL
 3. MAINTAIN OPTIMUM MOISTURE FOR COMPACTION OF SUBGRADE AND GRANITE MATERIAL
 4. GRADE TO SLOPE PER PLAN. SURFACE TO BE SMOOTH, EVEN AND FREE OF VARIATION.
 5. RE: PLANS FOR EDGING REQ'D

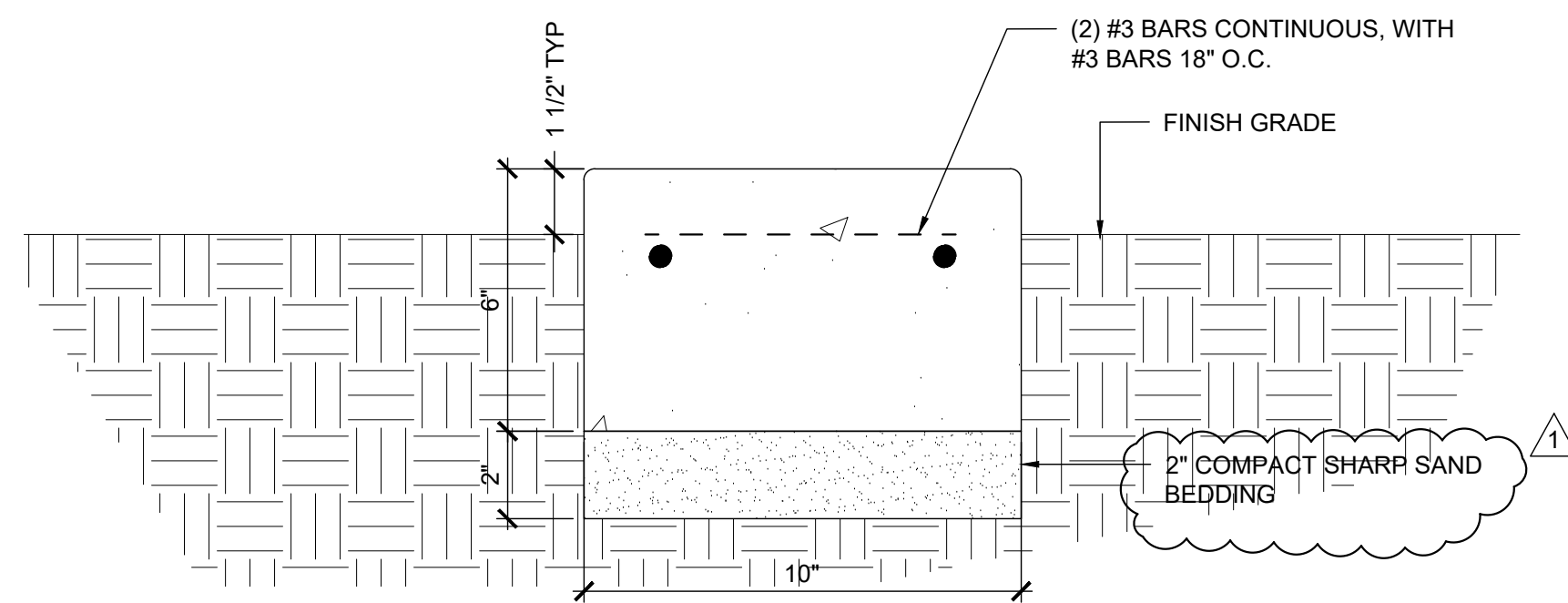
09 DECOMPOSED GRANITE PAVING SCALE: 1-1/2"=1'-0"



06 MORTAR SET BRICK CURB SCALE: 1-1/2"=1'-0"

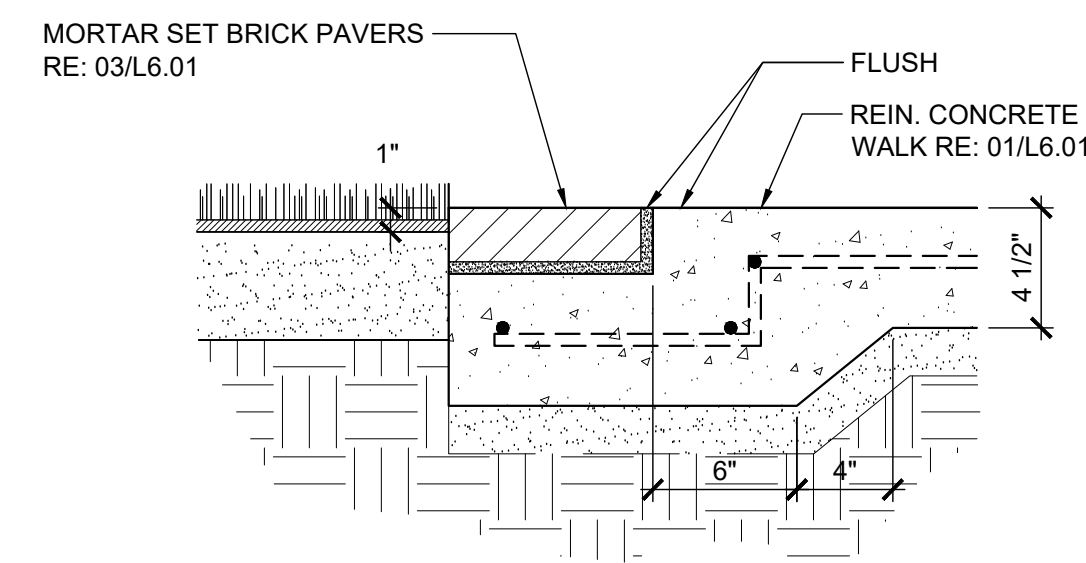


03 SECTION: MORTAR SET BRICK PAVERS SCALE: 3"=1'-0"

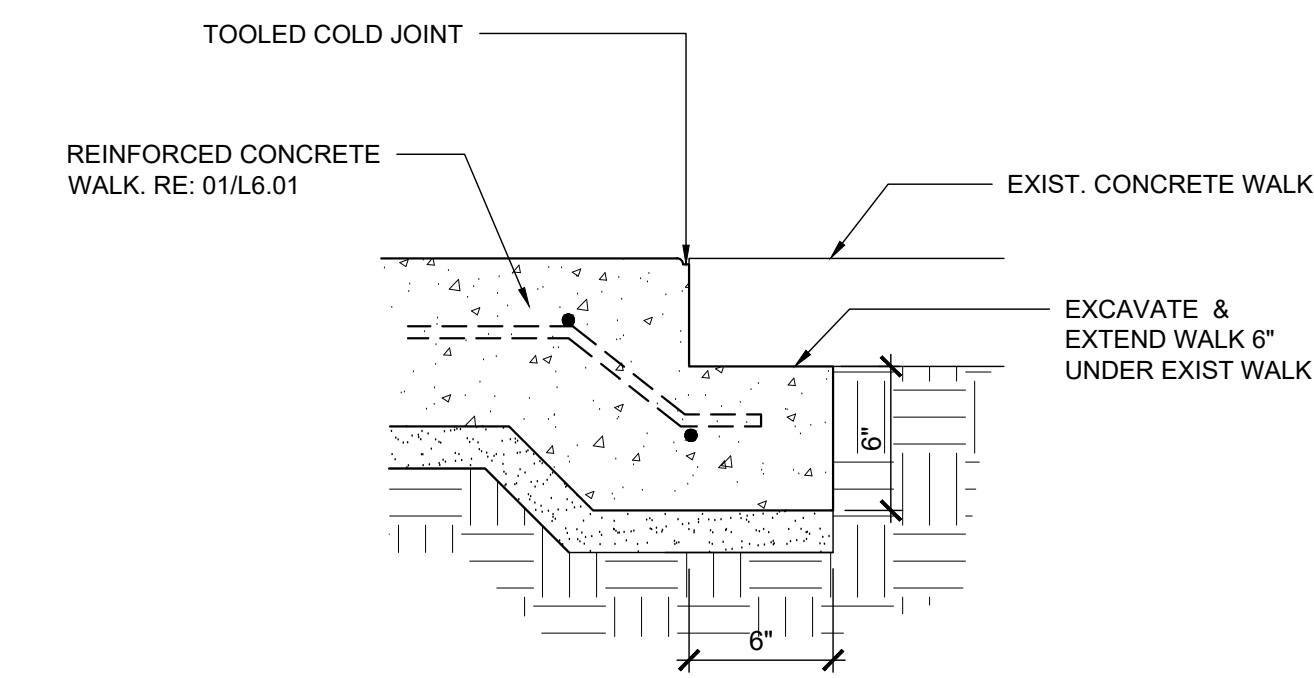


NOTE:
BROOM FINISH, TOOLED CONTROL JOINTS, 3' O.C.
DOWELED REDWOOD EXPAN. JOINT AT 24' O.C. AND
AT CORNERS AND ENDS

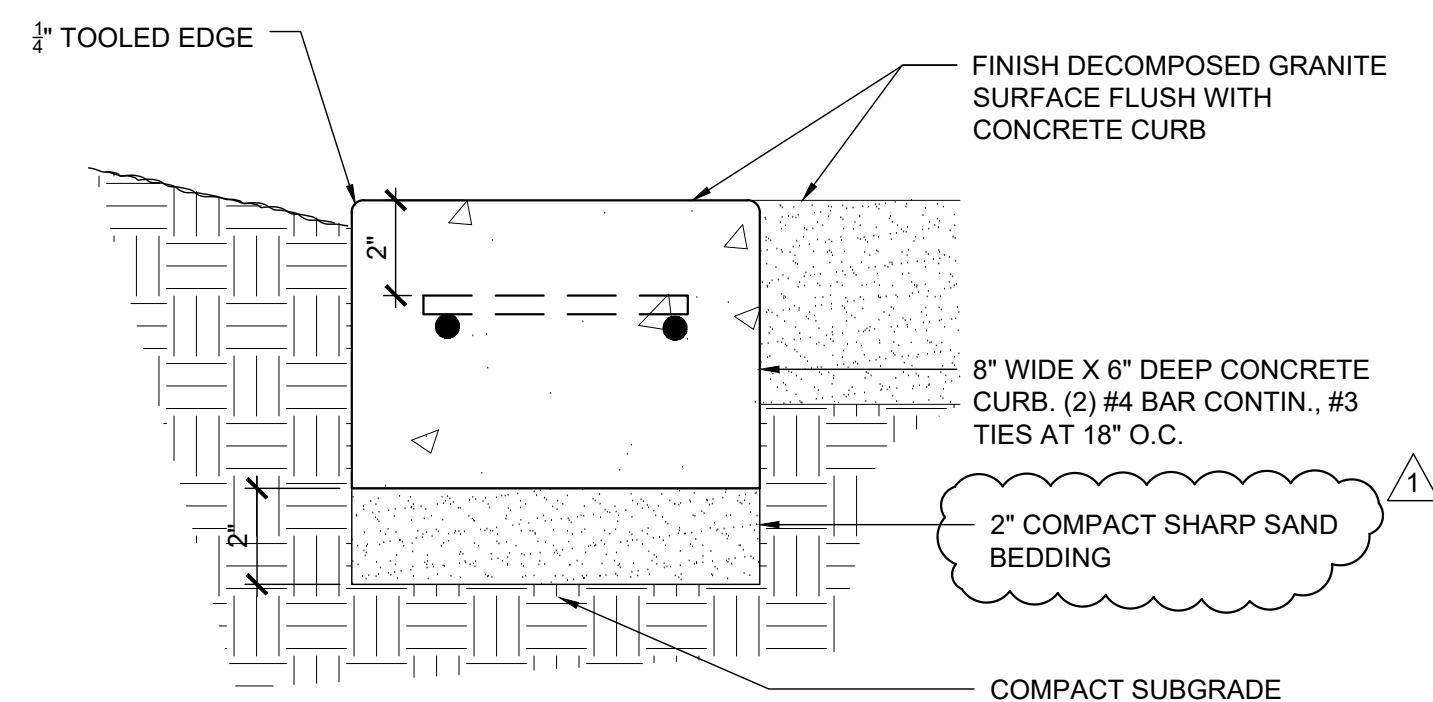
08 CONCRETE BAND AT PERIMETER FENCE SCALE: 3"=1'-0"



05 SECTION: MORTAR SET BRICK PAVERS AT CONCRETE WALK SCALE: 1-1/2"=1'-0"

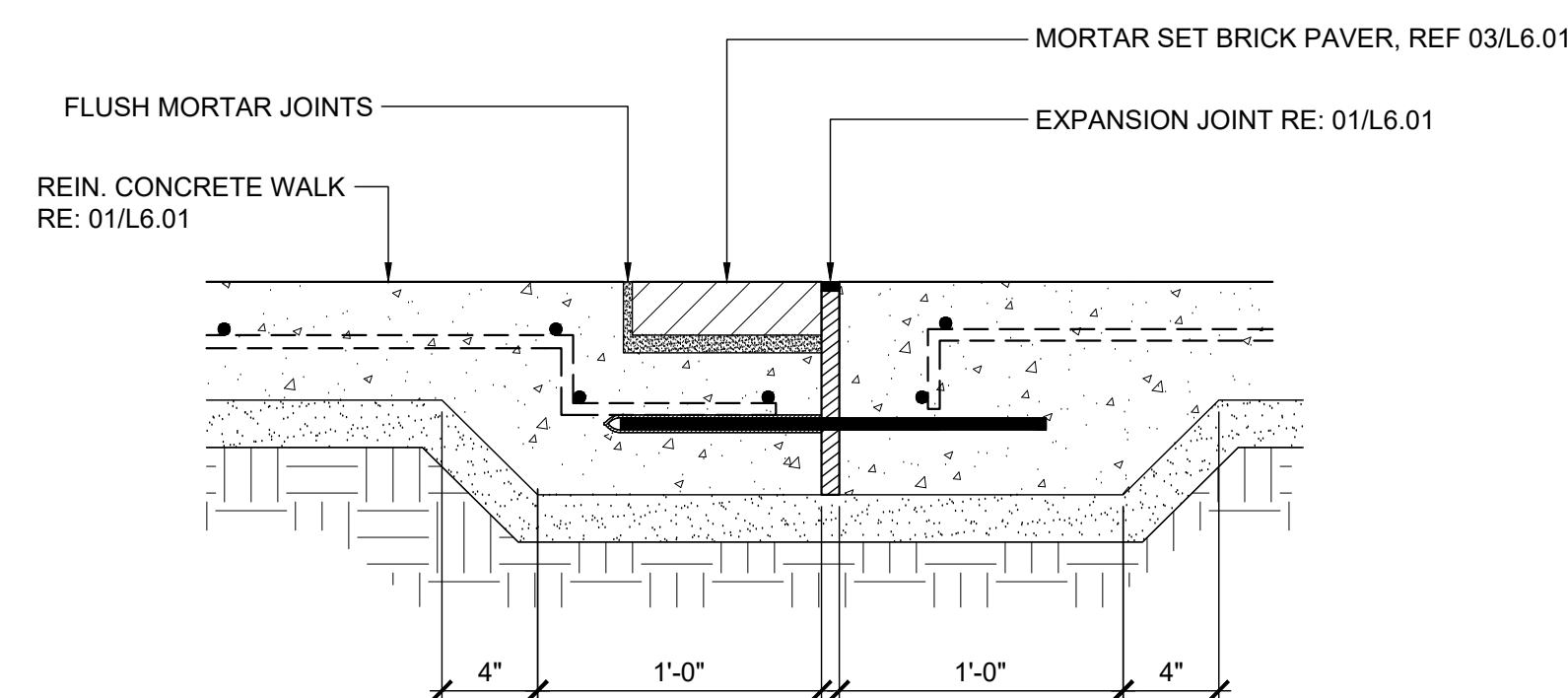


02 SECTION: WALK AT EXIST SIDEWALK SCALE: 3"=1'-0"

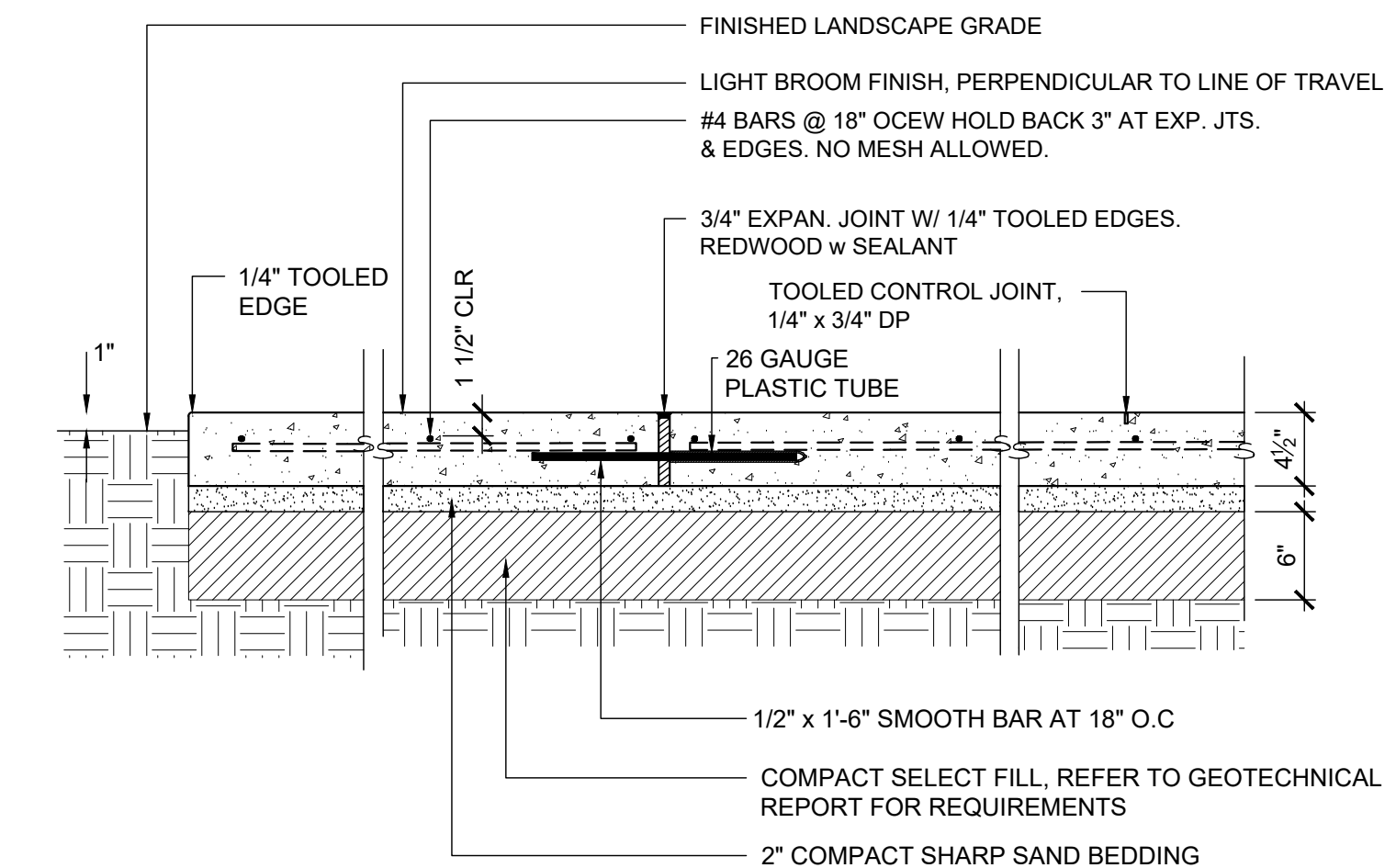


NOTE:
BROOM FINISH, TOOLED CONTROL JOINTS, 3' O.C.
DOWELED REDWOOD EXPAN. JOINT AT 24' O.C. AND
AT CORNERS AND ENDS

07 FLUSH CONCRETE CURB SCALE: 3"=1'-0"



04 SECTION: MORTAR SET BRICK BAND & EXPANSION JOINT SCALE: 1-1/2"=1'-0"



- NOTES:
1. ENSURE SUBGRADE HAS OPTIMUM MOISTURE CONTENT PRIOR TO CONCRETE POUR
 2. REFER PLAN FOR PRECISE JOINT LOCATIONS
 3. REFER TO TECHNICAL SPECIFICATIONS FOR ADDITIONAL REQUIREMENTS.
 4. NO SELECT FILL WITHIN DRILLINE OF EXISTING TREES. WALK WILL BE CUT TO GRADE, NO ADDITIONAL EXCAVATION FOR SELECT FILL.

01 CONCRETE WALK SCALE: 1"=1'-0"

JENNIE E. HUGHES PARK IMPROVEMENTS
6448 Sewanee Ave.,
West University Place, TX 77005



Parks & Recreation Department
3800 University Blvd.
West University Place, TX 77005

LANDSCAPE ARCHITECT & PRIME CONSULTANT



STRUCTURAL ENGINEER



21834 Northwest Freeway,
Cypress, TX 77429
Texas Registered
Engineering Firm No. 51

IRRIGATION



100% CONSTRUCTION DRAWINGS

NO.	DATE	DESCRIPTION
	3/6/2018	100% Construction Drawings
	4/16/18	Addendum #2

ISSUE DATE: NA
SCALE: AS NOTED

DETAILS

L6.01